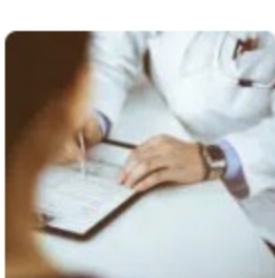


Blog

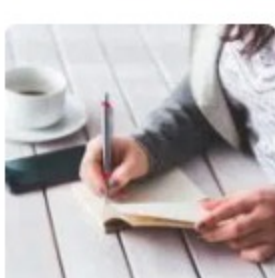
Home » News » What Are High Impact Side Effects Of Taking Benzodiazepine?

Search

Recent Posts



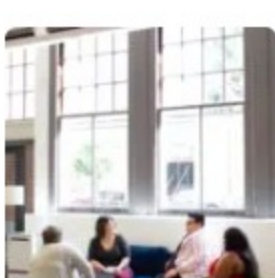
How Can I Get Checked-In Anonymously To An Addiction Treatment Center?
AUGUST 14, 2021 / 0 COMMENTS



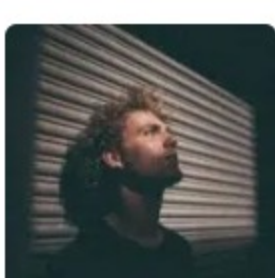
What to Know Before Asking for Time Off Work for Addiction Treatment
JULY 21, 2021 / 0 COMMENTS



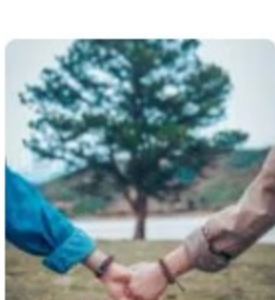
Intensive Outpatient Drug Treatment In Louisville
JULY 17, 2021 / 0 COMMENTS



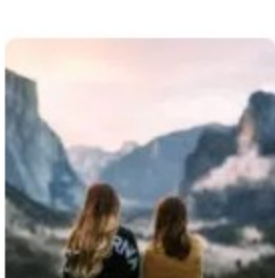
Outpatient Drug Treatment In Louisville
JULY 13, 2021 / 0 COMMENTS



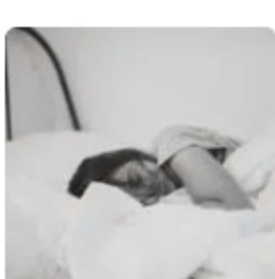
What are the signs of Drug Addiction?
AUGUST 15, 2022 / 0 COMMENTS



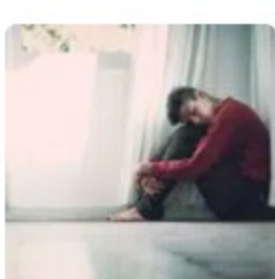
Couple's Drug Rehab at Impact IOP
AUGUST 13, 2022 / 0 COMMENTS



What Is Moral Injury & How It Impacts Women's Core Beliefs
AUGUST 11, 2022 / 0 COMMENTS



How Your Body Will React When You Use Heroin
AUGUST 9, 2022 / 0 COMMENTS



What Happens to Your Body When You Use Cocaine?
AUGUST 7, 2022 / 0 COMMENTS

Newsletter

Get all latest content delivered to your email a few times a month.

Your Email

GO

☐ Accept GDPR Terms



What Are High Impact Side Effects Of Taking Benzodiazepine?

[Louisville Addiction Treatment Center](#) - [🕒](#) March 9, 2022

Have you ever wondered what a high-impact side effect of taking benzodiazepine is? Benzodiazepines are medications that help to relieve anxiety. They're often prescribed if you have been diagnosed with anxiety or other disorders, such as depression. However, there are some serious side effects that could happen while taking these drugs.

What Are High Impact Side Effects Of Taking Benzodiazepine?

1. Severe Allergic Reaction

If you have a severe allergic reaction to the drug, it could cause your throat to swell and also trigger difficulty in breathing. If you start feeling dizzy or lightheaded, stop taking the benzodiazepine right away. Seek immediate medical help.

Benzodiazepine can also cause your muscles to stop working properly, so you could experience difficulty moving your arms and legs. This is a high-impact side effect, so call 911 immediately if it happens while you are taking this drug.

If you start experiencing signs of depression or thoughts about hurting yourself or committing suicide, contact your doctor immediately and they will assist with [admission](#) at a treatment facility.

2. Psychotic Disorders

If you start experiencing hallucinations or delusions while taking benzodiazepines, it could be a sign that you have a [psychological disorder](#).

3. Memory Loss

This mental health drug can actually cause issues with your memory. If you start having trouble remembering things or notice that you're not able to recall something, let a doctor know right away.

4. Severe Drowsiness

Benzodiazepines can cause severe drowsiness in some people, which could potentially lead to them falling asleep while driving or operating heavy machinery. This is a high-impact side effect, so use caution if you're taking any of these medications.

5. Weakened Immune System

If you start feeling more sick or catching the flu while taking benzodiazepines, it could be a sign that your immune system is weakened. This is a high-impact side effect, and you should speak with your doctor immediately if you experience any flu-like symptoms when taking this medication.

6. Difficulty Sleeping

Benzodiazepines are usually used for anxiety, so it's not really a surprise that they can have an impact on your ability to sleep. If you start having issues with sleeping while taking one of these health medications, let your doctor know right away.

7. Difficulty Breathing

This health medication can cause your breathing to become shallow or more rapid than normal, which could be dangerous if you experience chest pain or severe shortness of breath when taking it.

8. Heart Damage

If you start feeling chest pain, uneven heartbeats, or uneasiness when taking benzodiazepines, it could be a sign of heart damage.

9. Difficulty Swallowing

If you start experiencing dysphagia, which is difficulty swallowing, it could be a sign that your esophagus has been damaged. It's important to pay attention to this side effect because it can cause food or saliva to get into your lungs, which can lead to pneumonia.

10. Physical Dependence

Depending on the drug, you could become physically dependent on benzodiazepines after taking them for only a short period of time. This is a high-impact side effect that should not be overlooked because it can trigger severe withdrawal symptoms if you suddenly stop taking the medication. You will need therapy at a [treatment center](#) to address the addiction.

When To Contact Your Doctor

If you start experiencing any side effects that are causing severe or persistent pain, don't try to handle it on your own. Let your doctor know right away so they can help with [treatment options](#).

PLEASE SHARE THIS

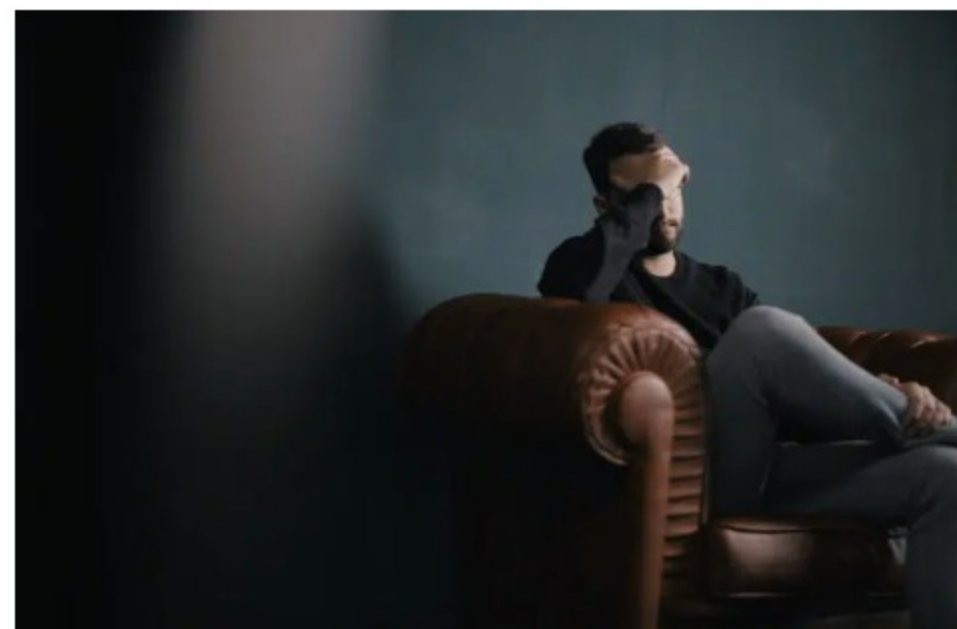


YOU MIGHT ALSO LIKE



Impact IOP Alcohol Addiction Intensive Outpatient Treatment In Louisville Services

[🕒](#) July 15, 2021



Alcohol Addiction Outpatient Treatment In Louisville Services

[🕒](#) July 19, 2021



12 Step Recovery Program In Louisville

[🕒](#) July 21, 2021



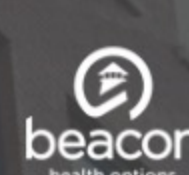
IMPACT OUTPATIENT PROGRAM

Impact Outpatient Program is an innovative, intensive outpatient program for substance abuse and co-occurring disorders, located just outside metro Louisville, in Mount Washington, Kentucky.

FOLLOW US ON

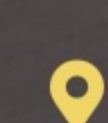


WE WORK WITH MOST INSURANCE



VERIFY BENEFITS

GET IN TOUCH



Mount Washington, Kentucky



(502) 912-1038

FIND US ON GOOGLE MAPS